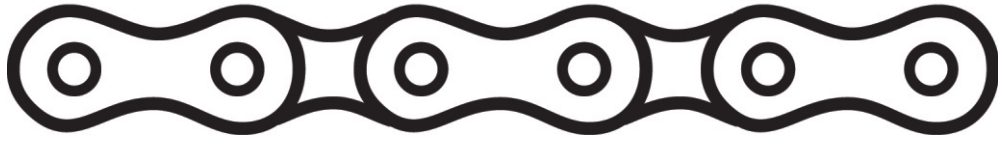


# PT PARTS



POWER TRANSMISSION PARTS

*Spare parts in-stock when you need them*

## Sitex Couplings



[www.ptparts.com.au](http://www.ptparts.com.au)



## SITEX COUPLING

### SITEX

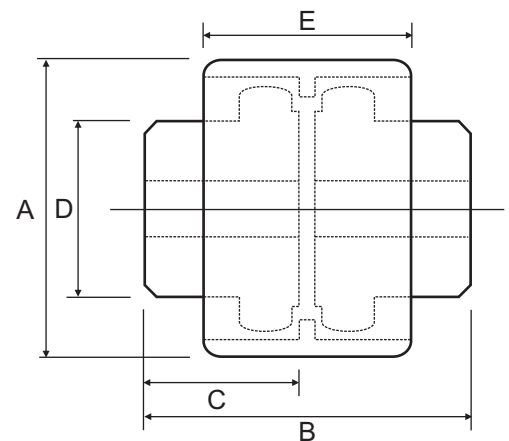
The Sitex coupling is a gear coupling that uses two steel hubs and a superpolyamide resin sleeve. The combination of steel hubs with polyamide sleeve makes the coupling maintenance and lubrication free. Sitex couplings match the Industry Standard so they are interchangeable with many other brands.

### PERFORMANCE DATA

Part No.	Max Bore	Power at 100 RPM kW	Nominal Torque (Nm)	Normal Maximum Speed (RPM)
0.5/14	14.0	0.105	10.0	14000
19	19.0	0.168	16.0	11800
2/24	24.0	0.220	21.0	10500
3.5/28	28.0	0.471	45.0	8500
5/32	32.0	0.628	60.0	7600
6.5/38	38.0	0.848	81.0	6700
8/42	42.0	1.047	100.0	6000
12/48	48.0	1.487	142.0	5580
30/65	65.0	3.979	380.0	4000
40/80	80.0	7.330	700.0	3100



### DIMENSIONAL DATA



Part No.	Bore		A	B	B1*	C	C1*	D	E
	Min	Max							
0.5/14	-	14.0	40.0	50.0	64.0	23.0	30.0	24.5	37.0
19	-	19.0	48.0	54.0	-	25.0	-	30.0	37.0
2/24	-	24.0	52.0	56.0	104.0	26.0	50.0	35.0	41.0
3.5/28	-	28.0	66.0	84.0	124.0	40.0	60.0	43.0	47.0
5/32	-	32.0	76.0	84.0	124.0	40.0	60.0	50.0	48.0
6.5/38	-	38.0	83.0	84.0	164.0	40.0	80.0	58.0	48.0
8/42	-	42.0	92.0	88.0	224.0	42.0	110.0	65.0	51.0
12/48	-	48.0	100.0	104.0	224.0	50.0	110.0	68.0	50.0
30/65	-	65.0	140.0	144.0	284.0	70.0	140.0	96.0	73.0
40/80	-	80.0	175.0	186.0	-	90.0	-	124.0	93.0

\*B1 & \*C1 These dimensions are for the long hubs.  
Long Hubs available on request

